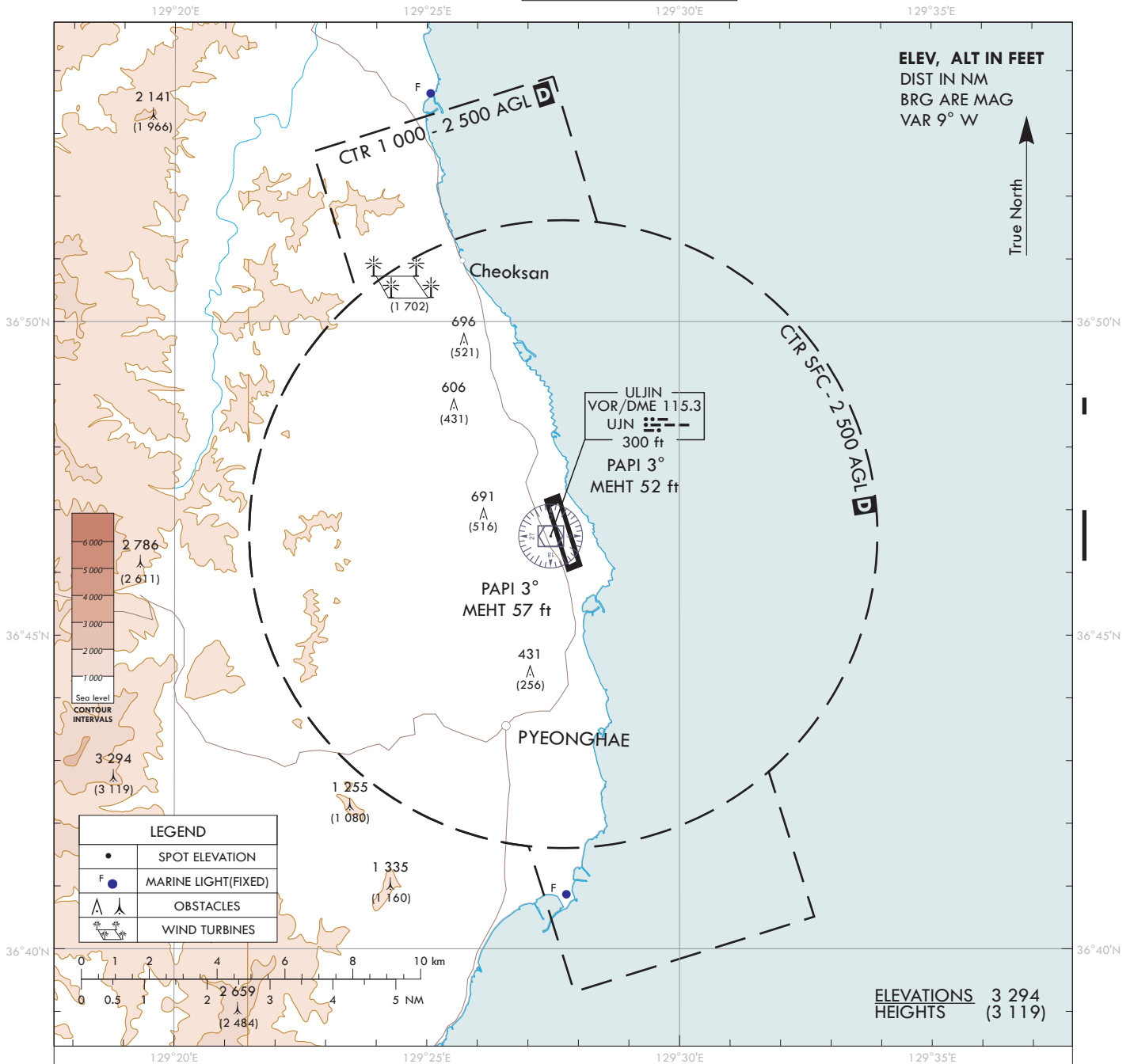


**VISUAL  
APPROACH  
CHART - ICAO**

AD ELEV 175 ft  
HEIGHTS RELATED  
TO AD ELEV

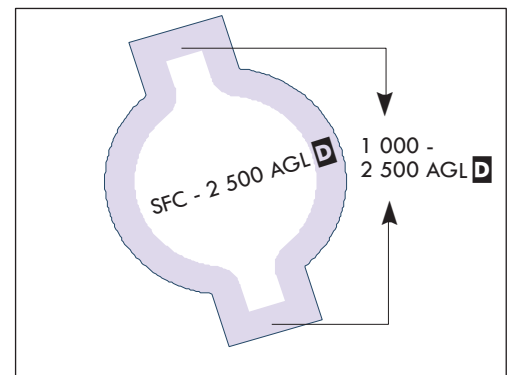
ULJIN	ARR	120.875
		317.65
ULJIN	TWR	118.55

ULJIN/Uljin



**VISUAL APPROACH PROCEDURE**

- Visual approach may be initiated by ATC or approved upon pilot request on traffic permitting basis when :
  - Ceiling : At or above 500 ft plus MVA
  - Visibility : Not less than 5 km
- ATS airspace : Class D (Refer to ENR 2.1-10)



Change : Information of UJN(VORTAC → VOR/DME).